

GOHO  
SOLAR  
LOUVER



THE SOLAR LOUVER MAKER

GOHO  
SOLAR

[www.gohosolar.com](http://www.gohosolar.com)

## GREETING

Hello,  
**GOHOSOLAR** is a **new renewable energy company** that is making every effort for customer satisfaction and best service and is steadily developing vis customer's support.

**GOHOSOLAR** will work together to provide differentiated value through more research and development and innovation, and to create a society where people and natural technology coexist.  
 Please continue to show your support and interest.

**GOHOSOLAR Co.,Ltd. CEO NamGung One**

## OUR FEATURES

Goho Solar values the value of the environment and will create a clean world where people and natural technology coexist.



Company Name  
**GOHOSOLAR**



Since  
**2015**



Main Business  
**New Renewable Energy**



Headquarters  
**Deoksan-eup, Jincheon-gun,  
 Chungcheongbuk-do**

## VISION



**GOLOBAL**  
**Best price and quality competitiveness**



**SOLUTION**  
**Leading Green Growth**



**PROVIDER**  
**A growing young enterprise**

## HISTORY

SLIDE / 2020 - 2015 TIMELINE

**2020**

- 06. Registration of design-related patent for pillar integral photovoltaic street lamp (No.30-1064214)
- Registration of design-related patent for pillar integral photovoltaic street lamp (No.30-1064215)

**2019**

- 08. Company name changed to 'GOHOSOLAR Co., Ltd.'

**2018**

- 03. Venture company certification
- 06. Factory registration
- 08. Capital increase 50,000,000 → 200,000,000KRW
- 09. Solar Louver Prototype Completed
- 12. Registration of Design-related patent of solar cell module (No.30-0987642)
- Registration of Design patent of solar cell module (No.30-0987642)

**2017**

- 03. 06 Relocation of the headquarter office in Songdo IT Center to Songdo Science Road, Yeonsu-gu, Incheon
- 04. 28 Patent acquisition (No.10-1733763 : Shading equipment for growing ginseng with solar power generation function)
- 08. 2017 Seoul Solar Expo Winning the Design Competition organized by Seoul Energy
- 08. 21 Patent registration for solar power generation facilities for crop cultivation (10-1771654).
- 08. 29 Family Business Agreement of Chungwoon University in Hongseong, South Chungcheong Province
- 12. Moving into Chungbuk Techno Park Photovoltaic Technology Center (transfer of corporation)

**2016**

- 01. 27 Service trademark registration "GOHO Sunlight"
- 10. 27 Patent acquisition (No.10-1671800 : Open-close type solar generation apparatus having multi frame)

**2015**

- 01. 23 Establishment of Smart Valley Materials in Songdo Mirae-ro, Yeonsu-gu, Incheon
- 10. 02 Trademark registration of "GOHOSOLAR"
- 01. Establishment of GOHO sunlight Co.,Ltd

# PRODUCTS

## >> BIPV

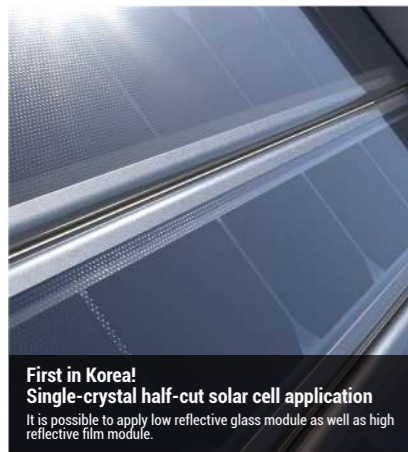
BIPV (Building Integrated Photo Voltaics) is a form in which solar cells are used as building materials. In particular, single-crystal half-cut solar louver of Gogo Solar is the first in Korea to possess a large number of intellectual property.

# BIPV

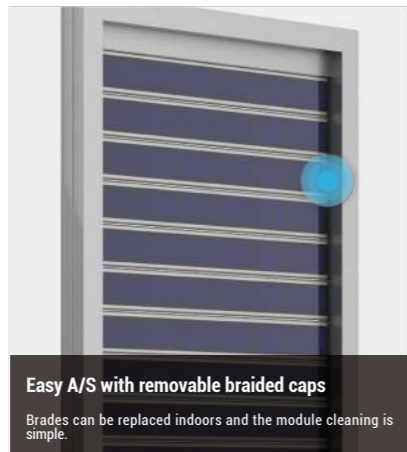
### GOHOSOLAR SOLAR LOUVER

Various solar louver is available like an existing one. Insect screen and automatic switching device application also is available. Especially, I designed it smartly while increasing power generation performance.

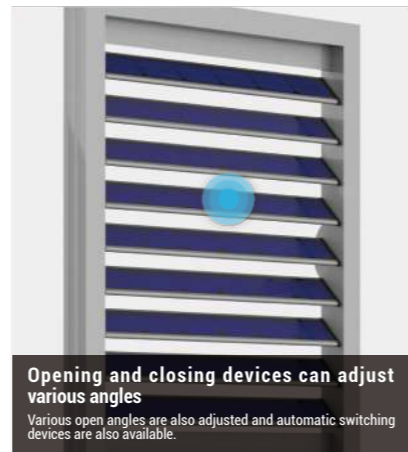
## PRODUCT FEATURES



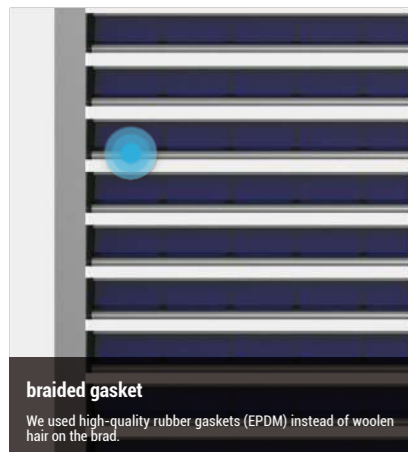
**First in Korea!**  
**Single-crystal half-cut solar cell application**  
It is possible to apply low reflective glass module as well as high reflective film module.



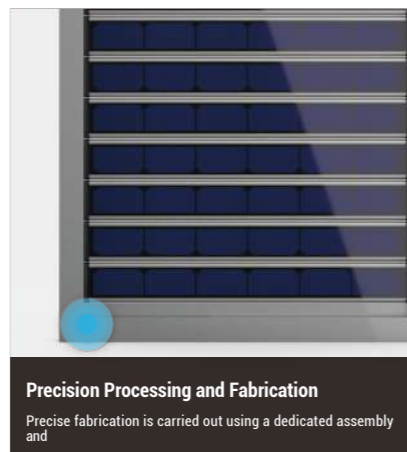
**Easy A/S with removable braided caps**  
Brads can be replaced indoors and the module cleaning is simple.



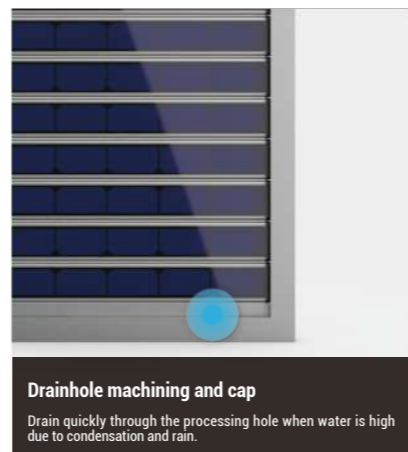
**Opening and closing devices can adjust various angles**  
Various open angles are also adjusted and automatic switching devices are also available.



**braided gasket**  
We used high-quality rubber gaskets (EPDM) instead of woolen hair on the brad.



**Precision Processing and Fabrication**  
Precise fabrication is carried out using a dedicated assembly and



**Drainhole machining and cap**  
Drain quickly through the processing hole when water is high due to condensation and rain.

## SPEC



- Power generation capacity: 200W ~ 300W
  - Solar cell: Made in U.S.A
  - Battery efficiency: 24% \*30% higher traditional product+
  - Module production temperature: -40 to +80
  - Product Size: Custom Made
  - Module weight: ultra light [2/10 compared to basic glass products]
  - Installation purpose: Boiler room of new apartment house.  
Outdoor air conditioner room
  - Solar cell life: more than 25 years
  - Manufacturer: GOHOSOLAR
  - Product Price: Call 043. 532. 2800
  - Note: Zero Energy Architecture (ZEB)
- \* Exhibitor: Korea Energy Corporation



# PRODUCTS

## Electricity cost savings and main components

### - SOLAR LOUVER 25TH - STAGE

BASE TATE		SOLAR LOUVER		POST-SETTING RATE		AMOUNT EXECTED TO BE REDUCED	
Electric charges(kwh)	Usage (kwh)	Measure of capacity(w)	Electric power capacity(kwh)	Electric power capacity(kwh)	Claims (won)	Monthly savings(won)	Year savings(won)
60,000	341	250	26	315	51,740	8,290	100,000
130,000	500	250	26	474	117,920	12,340	150,000
200,000	578	250	26	552	178,630	20,970	240,000

### - SOLAR LOUVER 20 - STAGE

BASE TATE		SOLAR LOUVER		POST-SETTING RATE		AMOUNT EXECTED TO BE REDUCED	
Electric charges(kwh)	Usage (kwh)	Measure of capacity(w)	Electric power capacity(kwh)	Electric power capacity(kwh)	Claims (won)	Monthly savings(won)	Year savings(won)
60,000	341	200	21	320	53,330	6,700	80,400
130,000	500	200	21	479	12,290	10,000	120,000
200,000	578	200	21	557	182,660	17,000	204,000



INVERTER	
rated output voltage	AC 210~250V
THD	< 5%
rated pressure voltage	DC 20V~55V
DC connector	MC4 Type Compatible(IP67)
inverter conversion efficiency	96.2%
MPPT voltage range	DC 27V~45V
Waterproof protection grade	IP65

\* The above performance may vary depending on the supplier

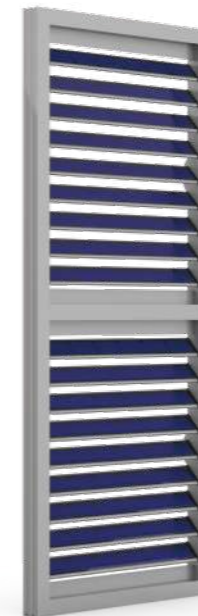


## General type

### GOHO 100L

The GOHOSOLAR louver general model has high power generation and can be opened and closed smoothly, and can operate independently between the insect screen and Solar Louver.

The power generation is up to 300 Wp, and the operator handle minimizes free play, allowing smooth opening and closing.



## Split type

### GOHO 200L

The GOHOSOLAR loover 200L type is a split model that allows for a slim design and independent opening and closing of upper and lower louvers.

The upper and lower split products are operated by different operators to minimize free play between brades to maximize confidential performance.

## Upper flue type

### GOHO 300L

Upper flue model of the GOHOSOLAR louver has the advantage of being able to emit both solar power generation and internal device emissions through the year.

The power generation is 200Wp, and it is a multi-tropical lover that releases emissions smoothly through the upper year.



# PRODUCTS

## GOHOSOLAR SOLAR FENCE

It is a handrail integral solar fence using single crystal half-cut solar cells. Power generation performance and aesthetics are exceptional especially.



Application cases



School



Public facility



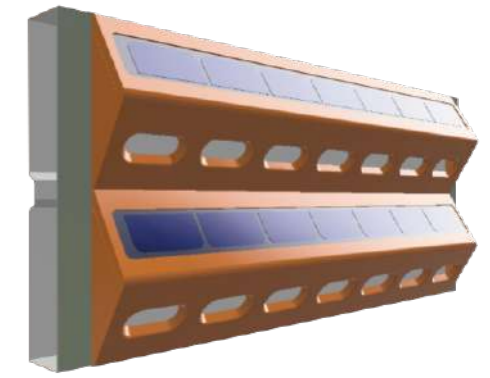
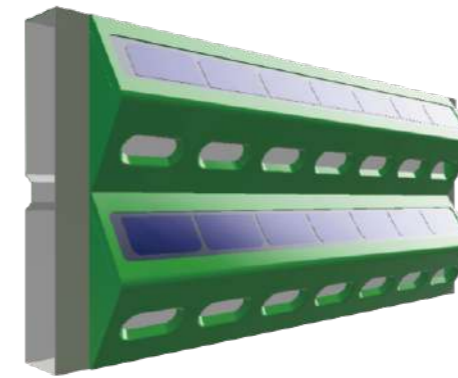
New town



Apartment

## GOHOSOLAR SOLAR SOUNDPROOF WALL

It is a solar soundproof wall with a single crystal half-cut solar cell. Especially, it has excellent power generation performance and aesthetics.



Application cases



Road



School



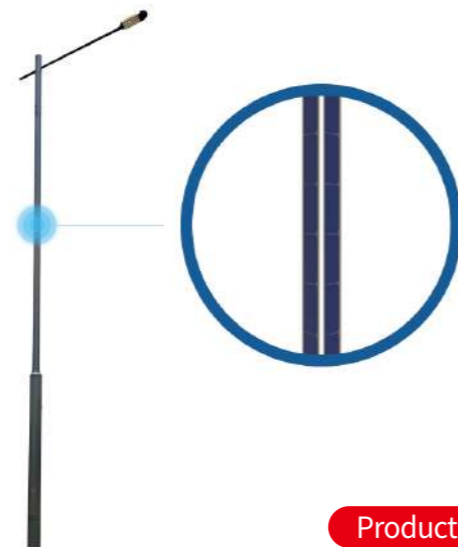
High-speed train



New town

## GOHOSOLAR SOLAR STREET LIGHT

It is a pillar-integrated photovoltaic street lamp using a single crystal half-cut solar cell. Especially, it has excellent aesthetic.



Product image



# PRODUCTS

## >> BCPV

BCPV(Building Contact type Photo Voltaics) is a form in which solar panels are closely attached to the roof of a building.GoHo solar, which aims for beautiful solar energy, offers the best product in BCPV.

### GOHOSOLAR BUILDING ROOF SOLAR PAD

Building roof solar pad is the product made through accumulated technology and GOHOSOLAR`s own philosophy that pursuing beautiful solar, and The strong point of GOHOSOLAR is that it can provide all the services it needs from the basic plan.



### GOHOSOLAR BARN ROOF SOLAR PAD

Barn roof solar pad is the product made through accumulated technology and GOHOSOLAR`s own philosophy that pursuing beautiful solar, and The strong point of GOHOSOLAR is that it can provide all the services it needs from the basic plan.



### GOHOSOLAR SOLAR PAD FOR GINSENG

Solar Pad for Ginseng Cultivation is the first in Korea to combine ginseng cultivation and photovoltaic power generation in the same farmland. It is a facility that enables continuous cultivation with the latest smart farm system suitable for ginseng cultivation environment.



# R&D

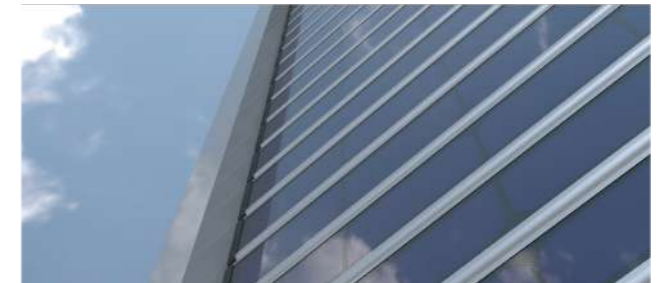
## SOLAR LOUVER

- Research & development of Solar module using single-crystal Half-cell solar cells
- The Korean first design technology for Photovoltaic louver using single-crystal Half-cell solar cells
- The Korean first manufacturing technology for Photovoltaic louver using single-crystal Half-cell solar cells



## BIPV

- The Korean first designing & manufacturing technology for solar fence using single-crystal half-cell solar cells
- The Korean first designing & manufacturing technology for pillar-integral solar street light using single-crystal half-cell solar cells
- The Korean first designing & manufacturing technology for sound absorption integral solar soundproof wall using single-crystal half-cell solar cells



## BCPV

- Designing and construction technique for building integrated building roof solar pad has excellent aesthetics
- Designing and construction technique for building integrated barn roof solar pad has excellent aesthetics
- Design/construction/operation technology for the world-first continuously cultivatable solar pad for ginseng cultivation



BEAUTY SOLAR  
GOHO  
SOLAR

**GOHOSOLAR**

Head Office : 9, Jeongtong-ro, Deoksan-eup, Jincheon-gun, Chungcheongbuk-do  
Branch Office : 1102, 56, Songdogwahak-ro, Yeonsu-gu, Incheon

TEL : +82.43.532.2800 / FAX : +82.32.574.2801 / e-mail : goho2015@naver.com